



**LED** LIGHTS FIXTURE SOLUTION

PRODUCT CATALOGUE  
**2024-25**



## Company Profile

365 Days Lighting is a leading indoor LED light fixtures manufacturer and supplier of linear lighting products with UL cUL and DLC certification.

365 Days is committed to advancing solid-state LED technology to make affordable, high performance, energy-efficient lighting and custom graphic products that bring value to our customers.

365 Days products cover a wide variety of application and budgets, including commercial, industrial for all kind indoor application.

365 Days provides clients across the world with cost-efficient, environmentally-friendly, long-life, highly-certified lighting solutions and complete brand OEM service to help our customer grow their business in their area.

365 Days equips with modern CNC Laser, CNC punching and CNC bending machines to manufacture almost any sheet metal product according to customer's request.

365 Days is a customer-centric company that positions itself as a value-added, trusted partner in developing superior lighting solutions through our world-class partner capabilities.

365 Days dedicated team management is the power that Brandon has been growing one of the most professional LED light fixtures MFG.

365 Days production facility is certified to ISO 9001:2008 standards. We strive to deliver products that achieve consistent high quality.

365 Days is committed to this company-wide initiative through employee education and training with the ultimate goal to make it part of the corporate culture and way of thinking of all employees.



# LED BULB



## TECHNICAL SPECIFICATION

| Code No. | Wattage | Beam Angle | Colour  | Light Source | Base       |
|----------|---------|------------|---|--------------|------------|
| SB-01    | 0.5w    | 120°       | Red, Blue,<br>Yellow, Green,<br>Orange, White, Pink | SMD LED      | B22 / E-27 |



## GAMMA DOB SERIES

### LED BULB SYSKA TYPE (270 Degree)

#### TECHNICAL SPECIFICATION

| Code No. | Wattage | Length / Dia (mm) | PF Surge Protection | Lumen  | Light Source | Base    |
|----------|---------|-------------------|---------------------|--------|--------------|---------|
| SB-02    | 5w      | 50mm              | ≥0.95 / 4KVA        | 500lm  | DOB          | B22/E27 |
| SB-03    | 7w      | 50mm              | ≥0.95 / 4KVA        | 700lm  | DOB          | B22/E27 |
| SB-04    | 9w      | 55mm              | ≥0.95 / 4KVA        | 900lm  | DOB          | B22/E27 |
| SB-05    | 10w     | 60mm              | ≥0.95 / 4KVA        | 1000lm | DOB          | B22/E27 |
| SB-06    | 12w     | 65mm              | ≥0.95 / 4KVA        | 1200lm | DOB          | B22/E27 |
| SB-07    | 15w     | 70mm              | ≥0.95 / 4KVA        | 1500lm | DOB          | B22/E27 |
| SB-08    | 18w     | 75mm              | ≥0.95 / 4KVA        | 1800lm | DOB          | B22/E27 |
| SB-09    | 22w     | 80mm              |                     |        |              |         |



## GAMMA DOB SERIES

### LED BULB SYSKA TYPE (High Wattage Bulb)

#### TECHNICAL SPECIFICATION

| Code No. | Wattage | Length / Dia (mm) | PF Surge Protection | Lumen | Light Source | Base    |
|----------|---------|-------------------|---------------------|-------|--------------|---------|
| SB-10    | 20w     | 80mm              | ≥0.95 / 4KVA        | 200lm | DOB          | B22/E27 |
| SB-11    | 30w     | 100mm             | ≥0.95 / 4KVA        | 300lm | DOB          | B22/E27 |
| SB-12    | 40w     | 120mm             | ≥0.95 / 4KVA        | 400lm | DOB          | B22/E27 |
| SB-13    | 50w     | 140mm             | ≥0.95 / 4KVA        | 500lm | DOB          | B22/E27 |





## DRIVE BASE

### LED BULB PHILIPS TYPE (180 Degree)

#### TECHNICAL SPECIFICATION

| Code No. | Wattage | Length / Dia (mm) | Lumen  | PF Surge Protection | Light Source | Base    |
|----------|---------|-------------------|--------|---------------------|--------------|---------|
| SB-14    | 5w      | 57mm              | 500lm  | ≥0.95 / 4KVA        | Driver Based | B22/E27 |
| SB-15    | 7w      | 57mm              | 700lm  | ≥0.95 / 4KVA        | Driver Based | B22/E27 |
| SB-16    | 9w      | 57mm              | 900lm  | ≥0.95 / 4KVA        | Driver Based | B22/E27 |
| SB-17    | 12w     | 65mm              | 1200lm | ≥0.95 / 4KVA        | Driver Based | B22/E27 |
| SB-18    | 15w     | 65mm              | 1500lm | ≥0.95 / 4KVA        | Driver Based | B22/E27 |
| SB-19    | 18w     | 75mm              | 1800lm | ≥0.95 / 4KVA        | Driver Based | B22/E27 |
| SB-20    | 20w     | 80mm              | 2000lm | ≥0.95 / 4KVA        | Driver Based | B22/E27 |



## DRIVE BASE

### HIGH WATTAGE LED BULB (HAMMER SERIES)

#### TECHNICAL SPECIFICATION

| Code No. | Wattage | Length / Dia (mm) | PF Surge Protection | Light Source | Base    | Lumen |
|----------|---------|-------------------|---------------------|--------------|---------|-------|
| SB-21    | 30w     | 100mm             | ≥0.95 / 4KVA        | Driver based | B22/E27 | 200lm |
| SB-22    | 40w     | 120mm             | ≥0.95 / 4KVA        | Driver based | B22/E27 | 300lm |
| SB-23    | 50w     | 120mm             | ≥0.95 / 4KVA        | Driver based | B22/E27 | 400lm |





## AC DC INVERTER LED BULB (RECHARGABLE BULB ) TECHNICAL SPECIFICATION

| Code No. | Wattage | Length / Dia (mm) | Lithium Battery | Battry Backup | Based     |
|----------|---------|-------------------|-----------------|---------------|-----------|
| SB-24    | 9w      | 65mm              | 2200mh          | 3-4 Hours     | B22 / E27 |
| SB-25    | 12w     | 70mm              | 2200mh          | 3-4 Hours     | B22 / E27 |



## OUTSIDE SINGLE BATTERY

## AC DC INVERTER LED BULB (RECHARGABLE BULB ) TECHNICAL SPECIFICATION

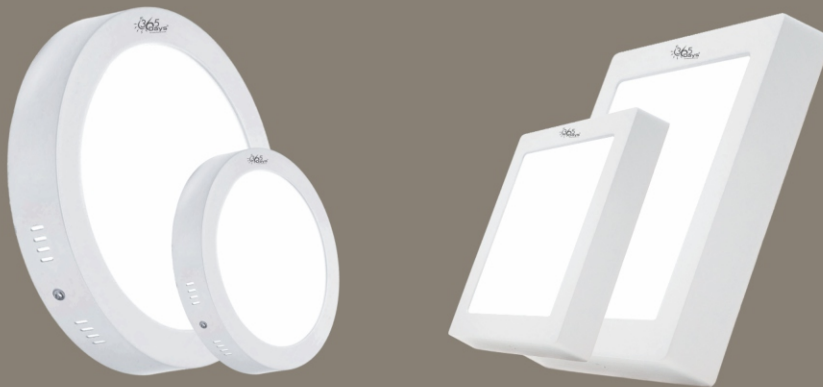
| Code No. | Wattage | Length / Dia (mm) | Lithium Battery | Battry Backup | Based     |
|----------|---------|-------------------|-----------------|---------------|-----------|
| SB-26    | 12w     | 80mm              | 2200mh          | 3-4 Hours     | B22 / E27 |
| SB-27    | 15w     | 80mm              | 2200mh          | 3-4 Hours     | B22 / E27 |





## TECHNICAL SPECIFICATION

| Code No. | Watt. | Outer Size | Type  | Rated Volt. | Rated Freq. | Lumen Output | PF     | Surge Protection |
|----------|-------|------------|-------|-------------|-------------|--------------|--------|------------------|
| SB-28    | 3W    | 85 mm      | RD/SQ | 110V-400V   | 50 HZ       | 240          | ≥ 0.95 | Upto 4KVA        |
| SB-29    | 6W    | 120 mm     | RD/SQ | 110V-400V   | 50 HZ       | 520          | ≥ 0.95 | Upto 4KVA        |
| SB-30    | 12W   | 174 mm     | RD/SQ | 110V-400V   | 50 HZ       | 960          | ≥ 0.95 | Upto 4KVA        |
| SB-31    | 18W   | 225 mm     | RD/SQ | 110V-400V   | 50 HZ       | 1400         | ≥ 0.95 | Upto 4KVA        |



## TECHNICAL SPECIFICATION

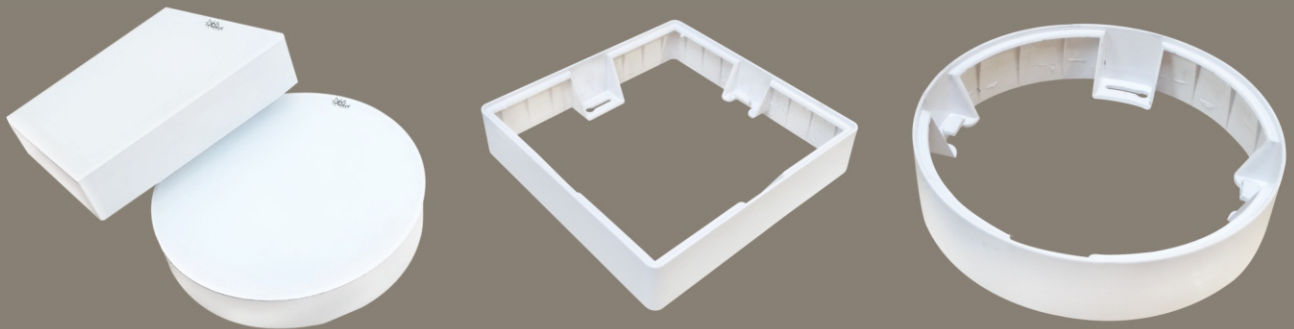
| Code No. | Watt. | Outer Size | Type  | Rated Volt. | Rated Freq. | Lumen Output | PF     | Surge Protection |
|----------|-------|------------|-------|-------------|-------------|--------------|--------|------------------|
| SB-32    | 3W    | 85 mm      | RD/SQ | 110V-400V   | 50 HZ       | 240          | ≥ 0.95 | Upto 4KVA        |
| SB-33    | 6W    | 120 mm     | RD/SQ | 110V-400V   | 50 HZ       | 520          | ≥ 0.95 | Upto 4KVA        |
| SB-34    | 12W   | 174 mm     | RD/SQ | 110V-400V   | 50 HZ       | 960          | ≥ 0.95 | Upto 4KVA        |
| SB-35    | 18W   | 225 mm     | RD/SQ | 110V-400V   | 50 HZ       | 1400         | ≥ 0.95 | Upto 4KVA        |

# LED BACKLIT PC SLIM / SURFACE PANEL



## TECHNICAL SPECIFICATION

| Code No. | Wattage | SHAPE | CUT SIZE | Lumen Output | PF     | Surge Protection | Rated Volt. |
|----------|---------|-------|----------|--------------|--------|------------------|-------------|
| SB-36    | 8 Watt  | RD/SQ | 95 mm    | 800lm        | ≥ 0.95 | Upto 4KVA        | 110V-400V   |
| SB-37    | 12 Watt | RD/SQ | 125 mm   | 1200lm       | ≥ 0.95 | Upto 4KVA        | 110V-400V   |
| SB-38    | 15 Watt | RD/SQ | 145 mm   | 1500lm       | ≥ 0.95 | Upto 4KVA        | 110V-400V   |
| SB-39    | 22 Watt | RD/SQ | 197 mm   | 2200lm       | ≥ 0.95 | Upto 4KVA        | 110V-400V   |



## TECHNICAL SPECIFICATION

| Code No. | Wattage | SHAPE | Lumen Output | PF     | Surge Protection | Rated Volt. |
|----------|---------|-------|--------------|--------|------------------|-------------|
| SB-40    | 8 Watt  | RD/SQ | 800lm        | ≥ 0.95 | Upto 4KVA        | 110V-400V   |
| SB-41    | 12 Watt | RD/SQ | 1200lm       | ≥ 0.95 | Upto 4KVA        | 110V-400V   |
| SB-42    | 15 Watt | RD/SQ | 1500lm       | ≥ 0.95 | Upto 4KVA        | 110V-400V   |
| SB-43    | 22 Watt | RD/SQ | 2200lm       | ≥ 0.95 | Upto 4KVA        | 110V-400V   |



## LED COB LIGHT MOVABLE

### TECHNICAL SPECIFICATION

| Code No. | Watt          | Cutout | Lumen  | PF    | Surge Protection | Material |
|----------|---------------|--------|--------|-------|------------------|----------|
| SB-44    | 5W Rainbow    | 87.5mm | 500lm  | ≥0.95 | Upto 4KVA        | PVC Body |
| SB-45    | 8W Concealed  | 100mm  | 800lm  | ≥0.95 | Upto 4KVA        | PVC Body |
| SB-46    | 12W Concealed | 115mm  | 1200lm | ≥0.95 | Upto 4KVA        | PVC Body |



**Cob 7 Watt**



**Cob 5 Watt**

## LED COB LIGHT MOVABLE

### TECHNICAL SPECIFICATION

| Code No. | Watt | Cutout | Lumen | PF    | Surge Protection | Outer Size |
|----------|------|--------|-------|-------|------------------|------------|
| SB-47    | 5w   | 50mm   | 500lm | ≥0.95 | Upto 4KVA        | 75mm       |
| SB-48    | 7w   | 75mm   | 700lm | ≥0.95 | Upto 4KVA        | 105mm      |

colour / tri colour





# LED CONCEALED / DEEP JUNCTION LIGHTS



## LED CONCEALED LIGHT

| Code No. | Watt    | Cutout             | outer | Lumen  | PF    | Surge Protection | Material |
|----------|---------|--------------------|-------|--------|-------|------------------|----------|
| SB-49    | 7w / 9w | Joy 80mm           | 105mm | 700lm  | ≥0.95 | Upto 4KVA        | PVC Body |
| SB-50    | 7w / 9w | Jumbo 78mm         | 109mm | 900lm  | ≥0.95 | Upto 4KVA        | PVC Body |
| SB-51    | 7w / 9w | classic 75mm       | 113mm | 1500lm | ≥0.95 | Upto 4KVA        | PVC Body |
| SB-52    | 7w / 9w | 2-3 Line alu. 80mm | 110mm | 1800lm | ≥0.95 | Upto 4KVA        | PVC Body |

colour / tri colour



## LED CONCEALED LIGHT



| Code No. | Watt    | Cutout            | outer | Lumen  | PF    | Surge Protection | Material |
|----------|---------|-------------------|-------|--------|-------|------------------|----------|
| SB-53    | 3w / 5w | deep surface 45mm | 80mm  | 700lm  | ≥0.95 | Upto 4KVA        | PVC Body |
| SB-54    | 3w / 5w | deep patti 42mm   | 75mm  | 900lm  | ≥0.95 | Upto 4KVA        | PVC Body |
| SB-55    | 3w / 5w | mini deep 53mm    | 80mm  | 1500lm | ≥0.95 | Upto 4KVA        | PVC Body |
| SB-56    | 3w / 5w | deep 44mm         | 80mm  | 1800lm | ≥0.95 |                  |          |
| SB-57    | 3w / 5w | deep hexa 44mm    | 80mm  | 2000lm | ≥0.95 |                  |          |

colour / tri colour





## TECHNICAL SPECIFICATION

| Code No. | Watt. | feet   | Lumen Output | PF   | Surge Protection |
|----------|-------|--------|--------------|------|------------------|
| SB-58    | 10w   | 1feet  | 500lm        | same | same             |
| SB-59    | 20w   | 2 feet | 1000lm       |      |                  |



### 2W SPOT LIGHT



### 3W SPOT LIGHT

## TECHNICAL SPECIFICATION

| Code No. | Watt | Size Dia (mm) | Cutout | Height (mm) | Lumen | PF     |
|----------|------|---------------|--------|-------------|-------|--------|
| SB-60    | 2w   | 42mm          | 32mm   | 16mm        | 140lm | ≥ 0.95 |
| SB-61    | 3w   | 40mm          | 30mm   | 32mm        | 210lm | ≥ 0.95 |



## TECHNICAL SPECIFICATION

| Code No. | Watt | Size (mm) L*W*H | Lumen   | CRI | PF    | Voltage Range |
|----------|------|-----------------|---------|-----|-------|---------------|
| SB-62    | 50w  | 220x190x30mm    | 5000lm  | >80 | ≥0.95 | 100-300V      |
| SB-63    | 100w | 280x240x50mm    | 10000lm | >80 | ≥0.95 | 100-300V      |
| SB-64    | 200w | 345x325x45mm    | 20000lm | >80 | ≥0.95 | 100-300V      |



## TECHNICAL SPECIFICATION

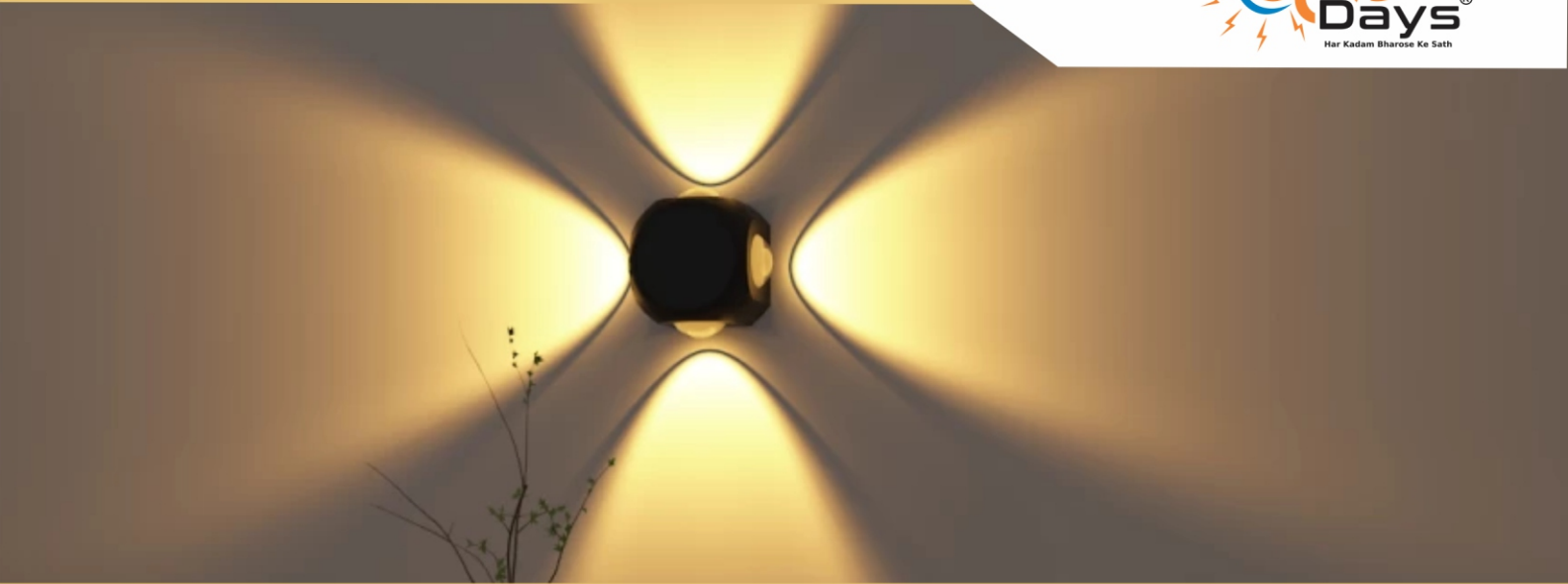
| Code No. | Watt | Size (mm) L*W*H | Lumen   | CRI | PF    | Voltage Range |
|----------|------|-----------------|---------|-----|-------|---------------|
| SB-65    | 30w  | 180x175x50mm    | 3000lm  | >80 | ≥0.95 | 100-300V      |
| SB-66    | 50w  | 220x222x50mm    | 5000lm  | >80 | ≥0.95 | 100-300V      |
| SB-66    | 100w | 284x272x60mm    | 10000lm | >80 | ≥0.95 | 100-300V      |
| SB-67    | 150w | 287x287x84mm    | 15000lm | >80 | ≥0.95 | 100-300V      |
| SB-68    | 200w | 305x305x89mm    | 20000lm | >80 | ≥0.95 | 100-300V      |



## TECHNICAL SPECIFICATION

| Product Code | Watt | Size (mm) L*W*H | Lumans  | CRI  | PF     | Volatge Range |
|--------------|------|-----------------|---------|------|--------|---------------|
| SB-69        | 20w  | 300x103x46mm    | 2000lm  | > 80 | ≥ 0.95 | 100-300V      |
| SB-71        | 30w  | 340x125x48mm    | 3000lm  | > 80 | ≥ 0.95 | 100-300V      |
| SB-72        | 50w  | 390x145x50mm    | 5000lm  | > 80 | ≥ 0.95 | 100-300V      |
| SB-73        | 100w | 450x170x56mm    | 10000lm | > 80 | ≥ 0.95 | 100-300V      |

# OUTDOOR LED WALL LIGHTS



## CUBE LED LIGHT

### TECHNICAL SPECIFICATION

| Product Code | Product Name | Watt | Colour       |
|--------------|--------------|------|--------------|
|              | 4 Way Wall   | 4x3w | 3000K, 6000K |



## UPDOWN LIGHT

### TECHNICAL SPECIFICATION

| Product Code | Product Name | Watt | Colour   |
|--------------|--------------|------|----------|
|              | 1+1          | 6w   | CW,NW,WW |
|              | 2+2          | 12W  | R/G/B/P  |
|              | 3+3          | 18W  |          |



## K LIGHT

### Product Specification

| Product Code | Product Name | Watt         | Colour   |
|--------------|--------------|--------------|----------|
|              | Half K       | 3w+3w, 5w+5w | CW,NW,WW |
|              | Full K       | 3w+3w, 5w+5w | CW,NW,WW |



**UP/DOWN**



**UP**

## CYLINDER LIGHT

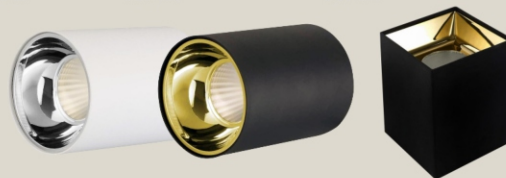
### TECHNICAL SPECIFICATION

| Product Code | Product Name   | Watt         | Colour   |
|--------------|----------------|--------------|----------|
|              | Cylinder Light | 3w+3w, 5w+5w | CW,NW,WW |
|              | Cylinder Light | 3w+3w, 5w+5w | CW,NW,WW |



## COB WHITE

| Product Code | Watt | Size Dia (mm) | Type  | Cutout (mm) | Height (mm) | Lumans | CRI | PF    |
|--------------|------|---------------|-------|-------------|-------------|--------|-----|-------|
|              | 7w   | 65mm          | RD/SQ | 50mm        | 60mm        | 60mm   | >80 | ≥0.95 |
|              | 12w  | 85mm          | RD/SQ | 65mm        | 80mm        | 80mm   | >80 | ≥0.95 |
|              | 18w  | 95mm          | RD/SQ | 75mm        | 95mm        | 95mm   | >80 | ≥0.95 |



## COB CYLINDER SURFACE LIGHT

### Product Specification

| Product Code | Watt | Size Dia (mm) | Type  | Height (mm) | Lumans | CRI | PF    | Operating Voltage |
|--------------|------|---------------|-------|-------------|--------|-----|-------|-------------------|
|              | 7w   | 72mm          | RD/SQ | 90mm        | 700lm  | >80 | ≥0.95 | 100-300V          |
|              | 12w  | 72mm          | RD/SQ | 90mm        | 1200lm | >80 | ≥0.95 | 100-300V          |
|              | 18w  | 80mm          | RD/SQ | 90mm        | 1800lm | >80 | ≥0.95 | 100-300V          |

# TRACK LIGHT / LINEAR LIGHT



## TRACK LIGHT

### TECHNICAL SPECIFICATION

| Product Code | Watt | Dimension (LXDXH) | Lumans | CRI | PF    | Operating Volatge |
|--------------|------|-------------------|--------|-----|-------|-------------------|
|              | 10w  | 116x50x132        | 1000lm | >80 | ≥0.95 | 100-300V          |
|              | 20w  | 116x66x148        | 2000lm | >80 | ≥0.95 | 100-300V          |
|              | 30w  | 116x75x170        | 3000lm | >80 | ≥0.95 | 100-300V          |



## Linear Track Light Product Specification

| Product Code | Watt   | Material           |
|--------------|--------|--------------------|
|              | 5 Led  | Alimiunium Casting |
|              | 8 Led  | Alimiunium Casting |
|              | 10 Led | Alimiunium Casting |



Mfd. By :

S.B. ELECTRO Delhi (India)

Address:

Delhi-110039

Phone No.:

E-mail: @gmail.com

Website: www..com

TERMS & CONDITIONS :

- Transport and packing charge extra.
- Payment method 70% advance and rest of amount before delivery.
- All led products GST will be charge 12% extra.
- After order with in one week delivery.
- In case ny reson to late dispatch your material to coordinate with our team.

**DEALER / DISTRIBUTOR**

PRINT & DESIGN BY : 9717725222

